



TRAVELLITE WOODEN 2 IN 1 COT

IMPORTANT

BEFORE ASSEMBLING THIS COT READ AND UNDERSTAND THE INSTRUCTIONS.

Do not use mattress other than the one supplied by the manufacturer.

Incorrect mattress can cause death.

Use only accessories as recommended by the manufacturer.

Ensure the top rails and base are fully locked.

Stop using this cot if any part of the cot is broken, torn or missing.

KEEP THESE INSTRUCTIONS IN A SAFE PLACE FOR FUTURE REFERENCE.



WARNING:

RETAIN FOR FUTURE REFERENCE.

READ ALL INSTRUCTIONS CAREFULLY BEFORE ASSEMBLY AND USE OF THIS COT.

ALWAYS FOLLOW THE INSTRUCTIONS.

THE CORRECT USE AND MAINTENANCE OF THIS PRODUCT IS ESSENTIAL.



WARNING



- USE ONLY THE MATTRESS SUPPLIED BY THE MANUFACTURER, INCORRECT MATTRESSES CAN CAUSE DEATH.
- USE ONLY ACCESSORIES AS RECOMMENDED BY THE SUPPLIER.
- ENSURE THE TOP RAILS AND BASE ARE FULLY LOCKED.
- DO NOT USE THIS COT IF ANY PART OF THE COT IS BROKEN, TORN OR MISSING.
- THIS BASSINET SHOULD BE REMOVED BEFORE THE CHILD CAN SIT UP.
- TO PREVENT FALLS REMOVE THE BASSINET MUST NOT BE USED ONCE A CHILD CAN SIT UP.
- NEVER PLACE A CHILD IN THE COT WHEN THIS BASSINET IS IN PLACE.
- THIS BASSINET IS INTENDED FOR ONE CHILD UP TO 6 MONTHS OR WEIGHING UP TO A MAXIMUM OF 9KG.
- NEVER LEAVE CHILD UNATTENDED.
- Keep children away while assembling/disassembling the cot.
- Do not leave anything in the folding cot (such as toys) that provide a foothold.
- Do not use the folding cot near naked heat sources, bar heaters, open fires or exposed flames.
- Do not place more than one child in the cot at the same time.
- Do not add an extra mattress as this may cause suffocation.
- Do not use this cot with a child who can climb out, weighs more than 15kg, or is taller than 890mm.
- Keep the folding cot clear of trailing cables and hanging cords.
- Keep medication and small items that a child could choke on, away from the cot.
- Check that the assembly of the cot is correct and safe.
- Check that all locking devices are fully engaged.
- Folding cots with padded rims should not be used if the covering material has been bitten through.
- There is potential for fingers or parts of the body to be injured when the product is being folded or unfolded, and that due care should be exercised.



WARNING:

- Take care when unpacking and during assembly.
- Dispose of all packing materials carefully after assembly.
- Regularly check that all fittings remain tight. Tighten if required.
- Inspect the product before assembly and periodically during use. Never use this product if there are any loose or missing fasteners, joints or broken parts.
- To reduce the risk of Sudden Infant Death Syndrome (SIDS), paediatricians recommend healthy infants be placed on their backs to sleep, unless advised by your physician.
- Be aware of the risk of open fires and other sources of strong heat, such as electric bar fires, gas fires, etc. in the near vicinity of the product.
- Any additional or replacement parts should only be obtained from the manufacturer or distributor.
- Never substitute parts.

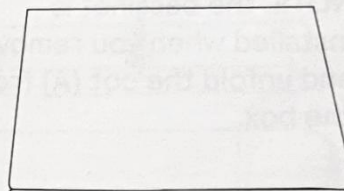
This product complies with AS/NZS 2195:2010 + A1:2013 + A2:2015.

PARTS LIST

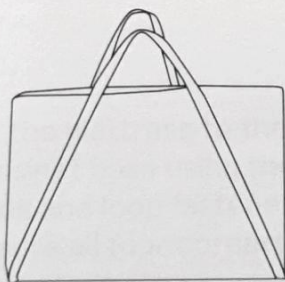
A Cot and bassinet x 1



B Mattress x 1



C Carry bag x 1



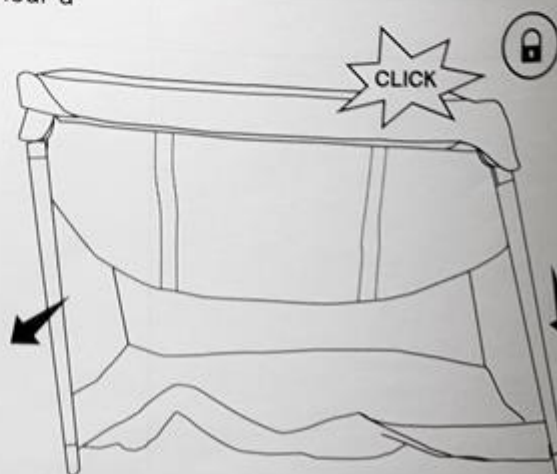
UNFOLDING

Unpack all contents and check that all parts are present before starting assembly. Please refer to the parts list.

1. **NOTE.** the bassinet is installed when you remove and unfold the cot (A) from the box.

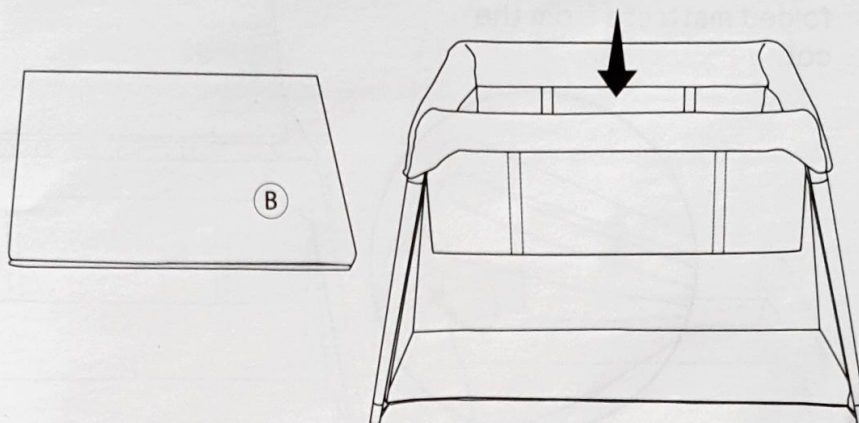


2. Use both hands to lift the cot so that the legs and fabric hang down.
3. Unfold the four legs. The legs are locked into position when you hear a "click".

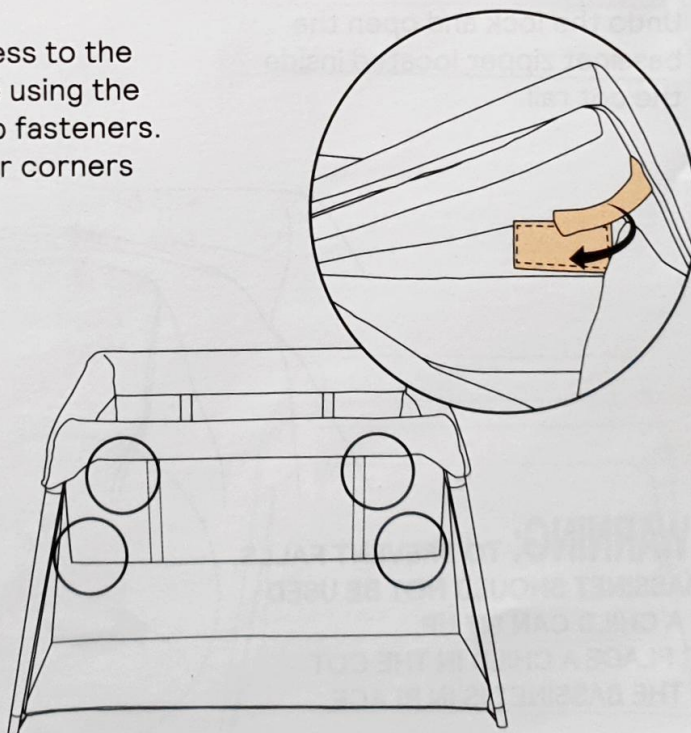


BASSINET

1. Insert the folded mattress (B) into the cot bassinet.

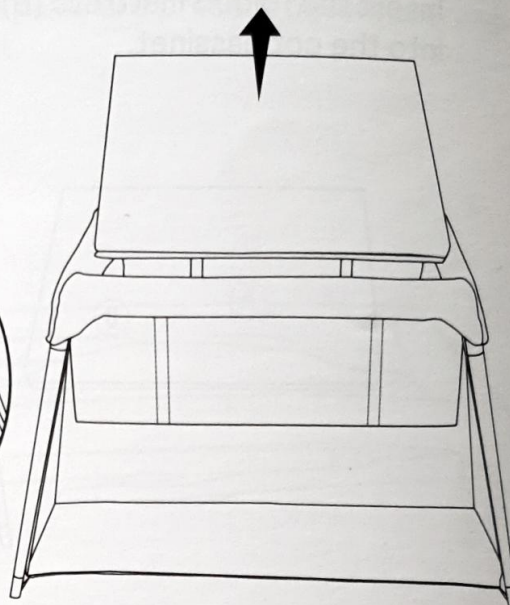
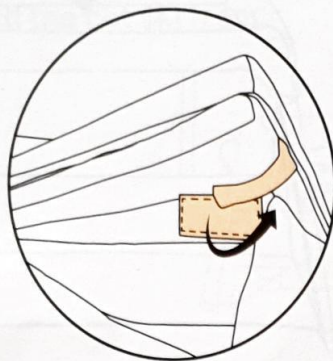


2. Fix the mattress to the bassinet base using the hook and loop fasteners. Ensure all four corners are secure.

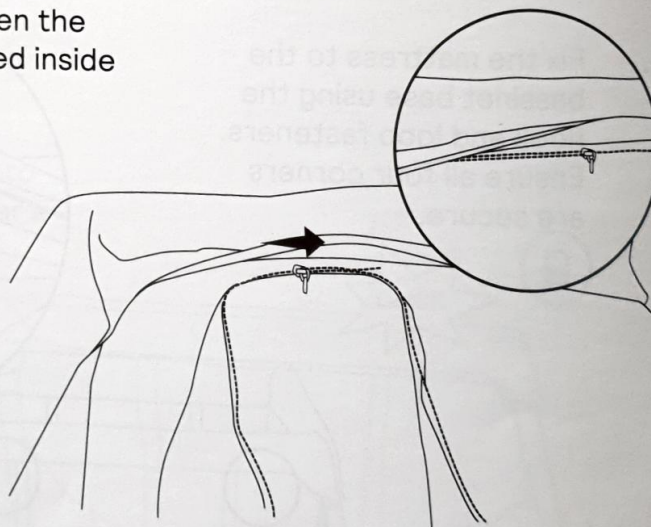


BASSINET

3. To uninstall the bassinet (B), undo the hook and loop fasteners and remove the folded mattress from the cot.



4. Undo the lock and open the bassinet zipper located inside the cot rail.

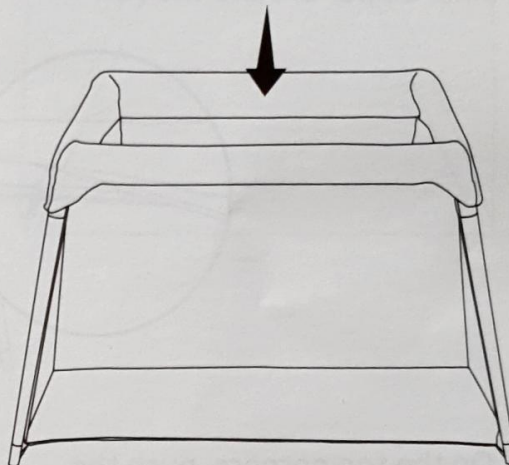
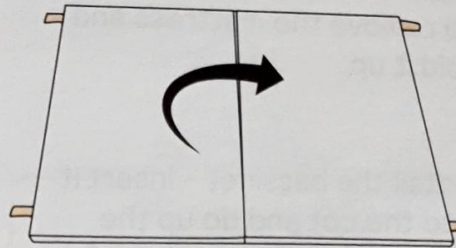


⚠ WARNING: TO PREVENT FALLS, THIS BASSINET SHOULD NOT BE USED ONCE A CHILD CAN SIT UP. NEVER PLACE A CHILD IN THE COT WHEN THE BASSINET IS IN PLACE.

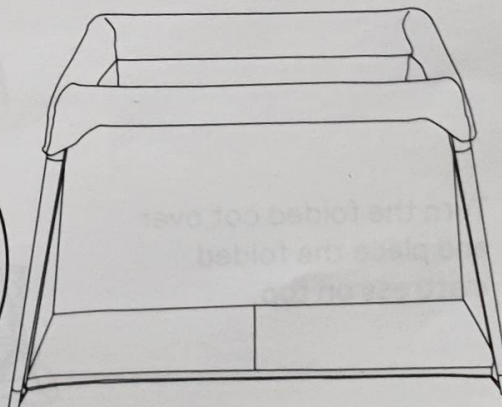
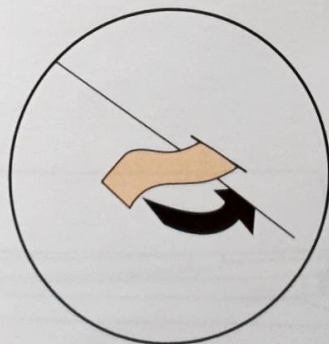
TRAVEL COT

1. Once you have removed the bassinet, unfold the mattress and insert it into the cot.

NOTE. you may have to unfold the mattress when inside the cot.

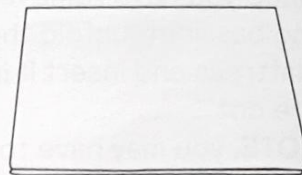


2. Secure the mattress to the base by fixing the hook and loop fasteners onto the underside of the base.

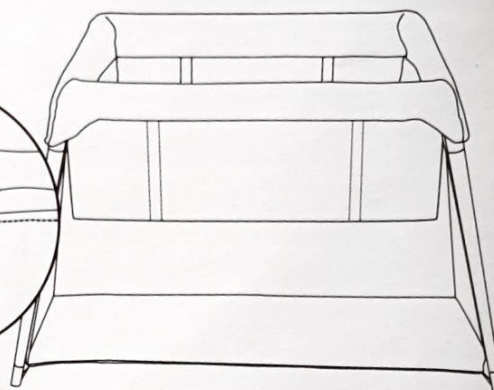
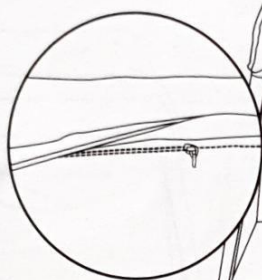


FOLDING

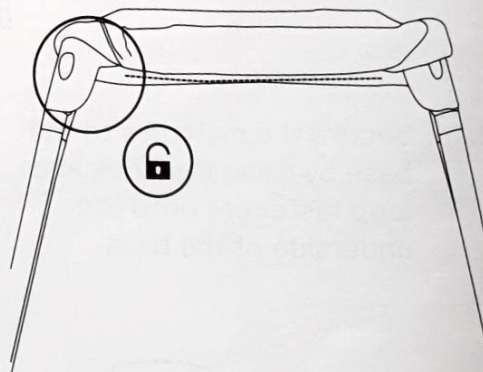
1. Before folding the cot, be sure to remove the mattress and fold it up.



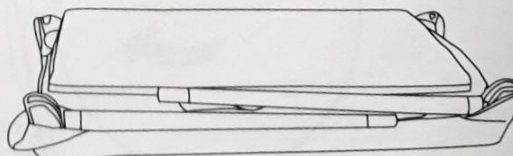
2. Install the bassinet - insert it into the cot and do up the inner zipper around the rail.



3. On the top corners, push the buttons upwards. At the same time push the legs inwards.
NOTE. turn up the rail corner fabric slightly to access the buttons.

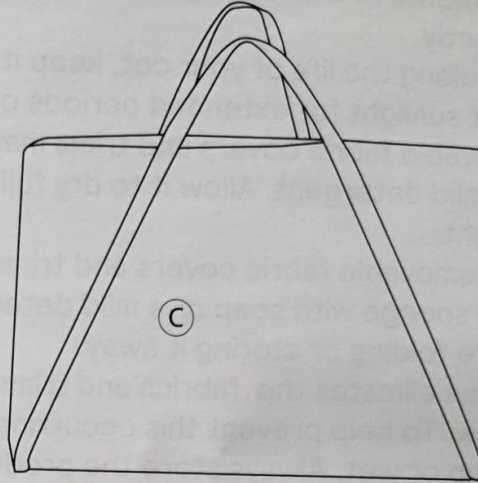


4. Turn the folded cot over and place the folded mattress on top.



FOLDING

5. The cot is now ready to be stowed in the carry bag (C) provided.



CARE AND MAINTENANCE

- Regularly inspect and maintain your product to ensure the freedom of movements of the locking devices and assembly fittings are tightened correctly.
- To prolong the life of your cot, keep it clean and do not leave it in the direct sunlight for extended periods of time .
- Removable fabric covers and trims may be cleaned using warm water with mild detergent. Allow it to dry fully, preferably away from the direct sunlight.
- Non removable fabric covers and trims may be spot cleaned using a damp sponge with soap or a mild detergent. Allow it to dry completely before folding or storing it away.
- In some climates the fabrics and trims may be affected by mould and mildew. To help prevent this occurring, do not fold or store the product if damp or wet. Always store the product in a well ventilated area.
- Do not dry clean.
- Do not use bleach.
- Do not iron.
- To maintain the safety of your cot discontinue use if there are bent, torn, worn or broken parts.



WARNING: IF THE SIDES DO NOT LATCH FIRMLY OR THERE ARE HOLES IN THE MESH SIDES, DISCONTINUE USE IMMEDIATELY.